

UMass Wood Structures Symposium, September 8-9, 2011, University of Massachusetts Campus Center, Amherst, MA

Project INTENSYS

univ.-prof. arch. di dr. maria schneider
institute of urban design and regional planning faculty of architecture university of innsbruck a 6020 innsbruck technikerstrasse 13
architektur ps michael pfleger maria schneider a 6020 innsbruck adolf piclher platz 6

Research Project INTENSYS

INTEgrated designed high efficient ENergy- and societal SYStems for future sustainable housing
September 2008 to March 2011

Initial Position

Research Project INTENSYS



Crossculture and Generations



<http://es-multicultural-stuff.blogspot.com/>
<http://www.bluskywaters.com/testimonials.html>

- ☐ Indicates countries that have ratified the treaty
- ☐ are Annex I and II countries that have ratified the treaty
- ☐ is not yet decided
- ☐ is no intention of ratifying

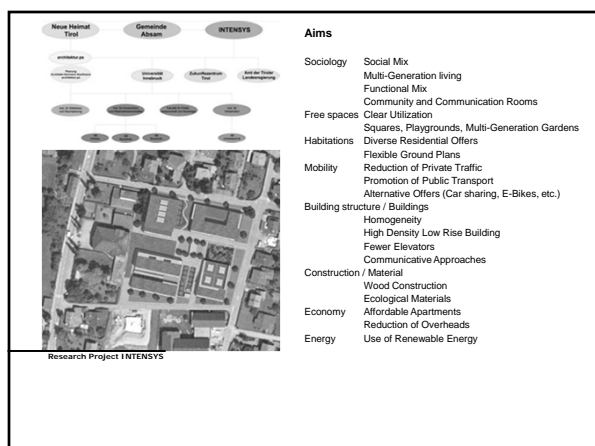
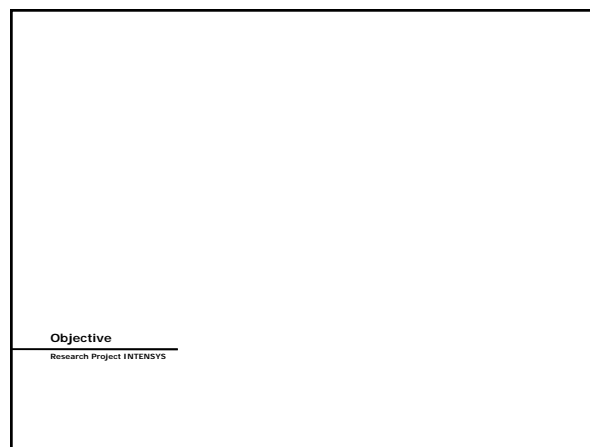
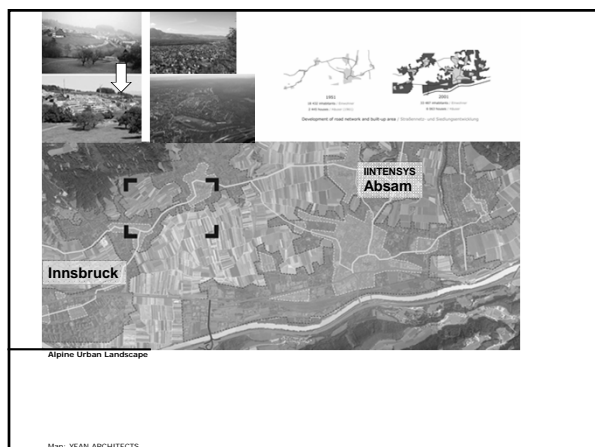
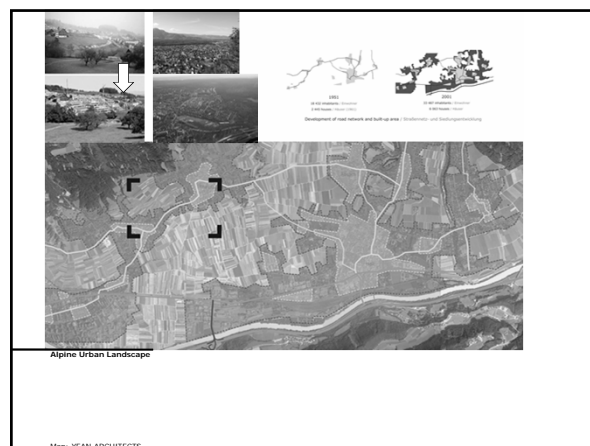
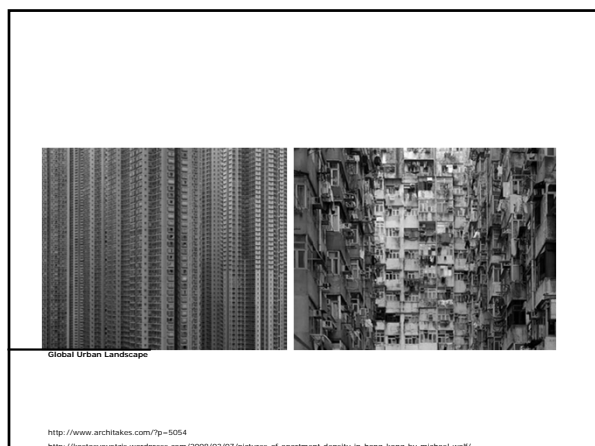


Kyoto Protocol Participation Map 2010

http://de.wikipedia.org/wiki/index.php?title=Datei:Kyoto_Protocol_participation_map_2010.png&filetimestamp=20110520164553



Global Urban Landscape

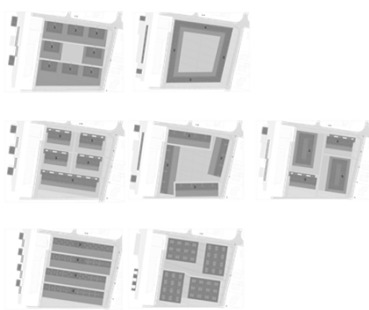


Research Process

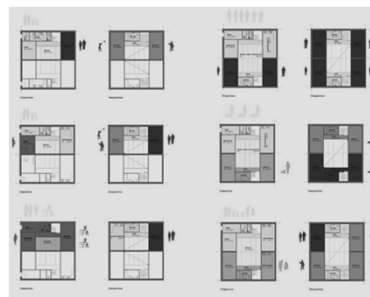
Research Project INTENSYS



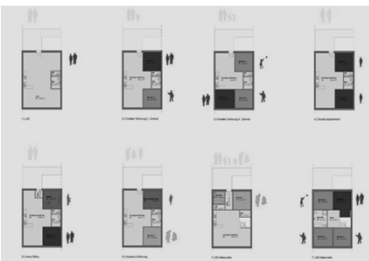
Building Site



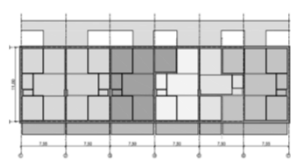
Research Settlement Pattern



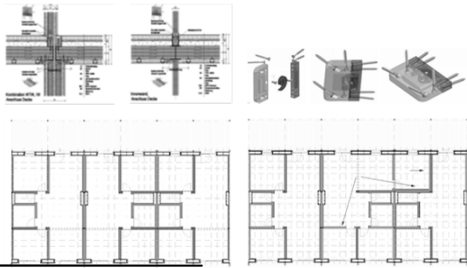
Development Basic Floor Plans



Development Basic Floor Plans



Development Flexible Wall Elements



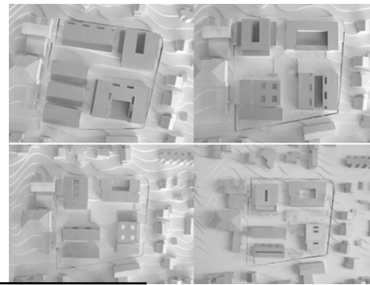
Basical Floor Plans 76 m² expanded to 93 m²



Development flexible Walls

Design Process

Research Project INTENSYS



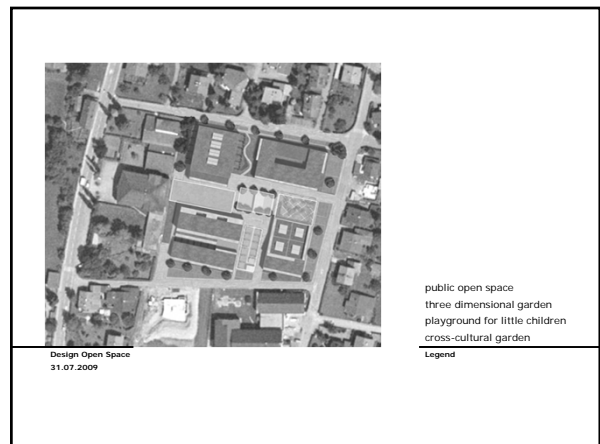
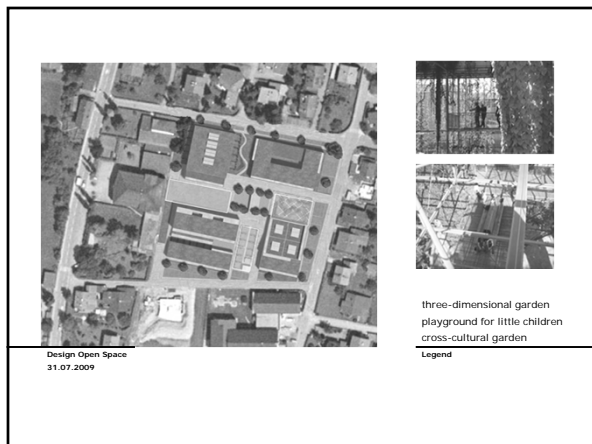
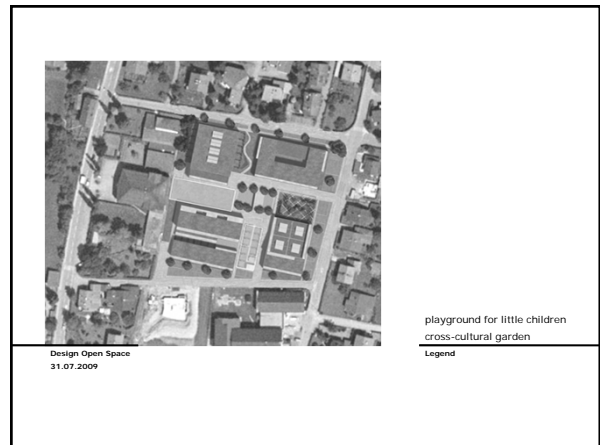
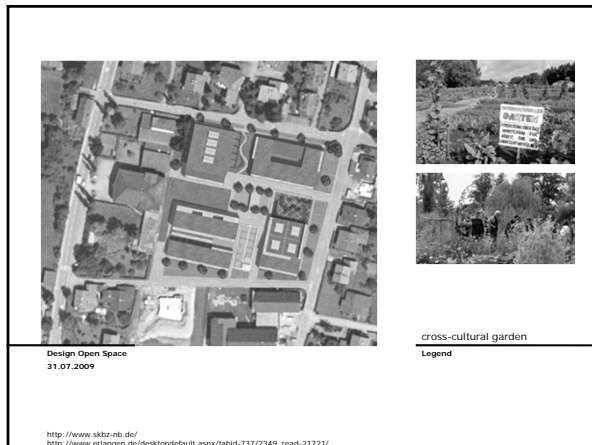
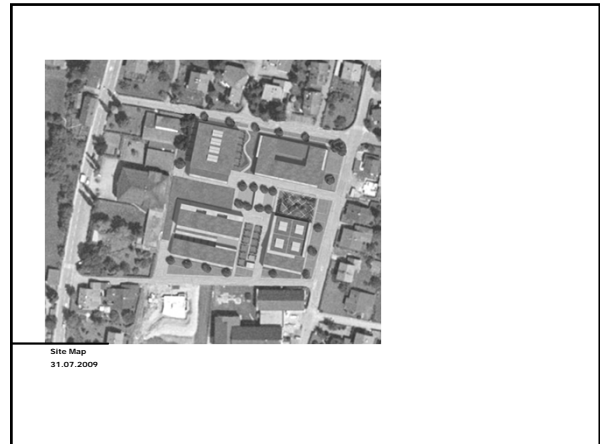
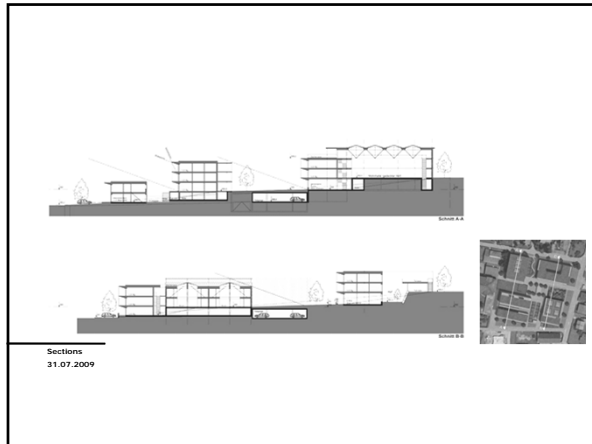
Phases of Project Development

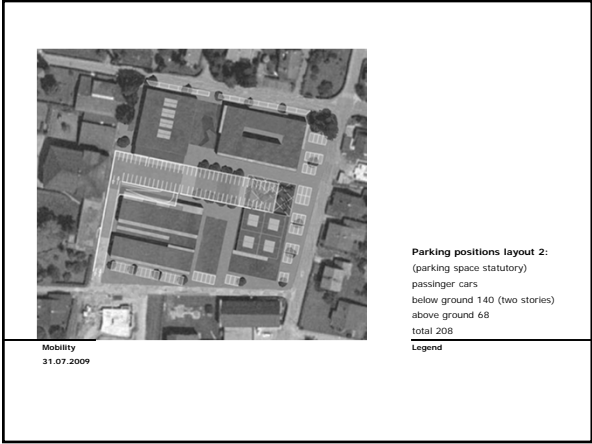
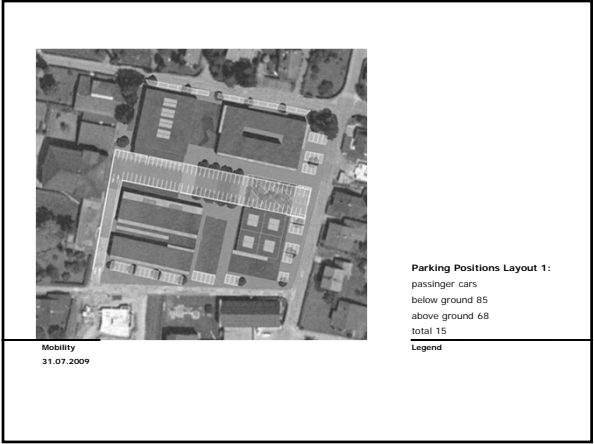
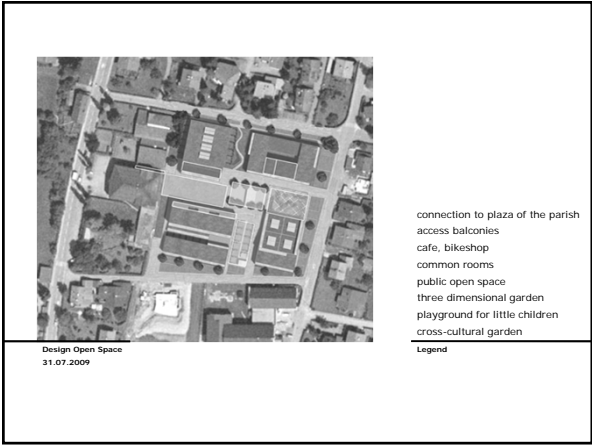
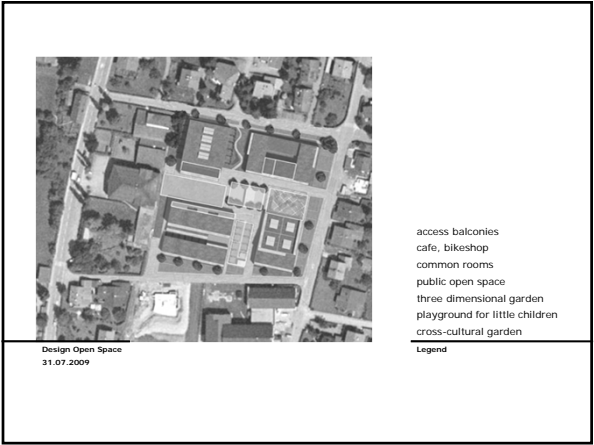
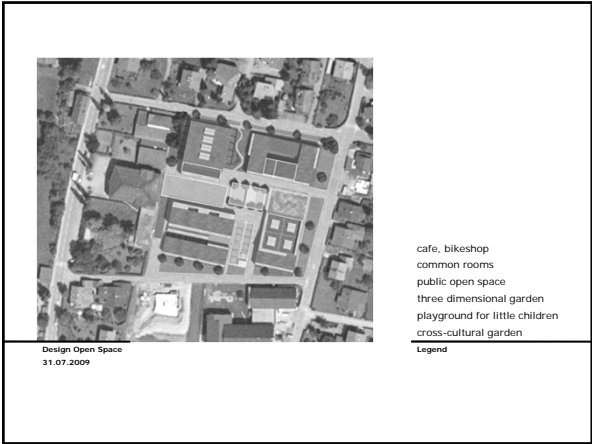
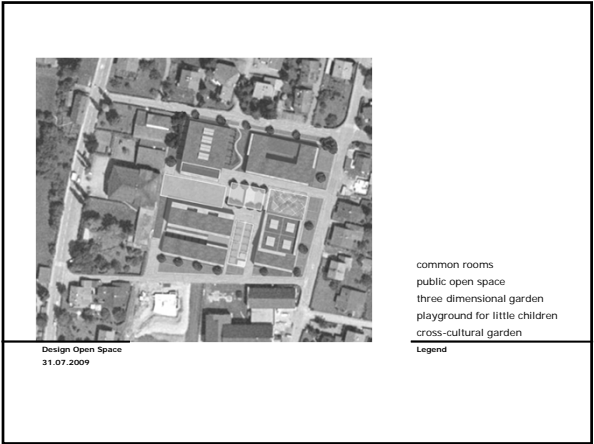


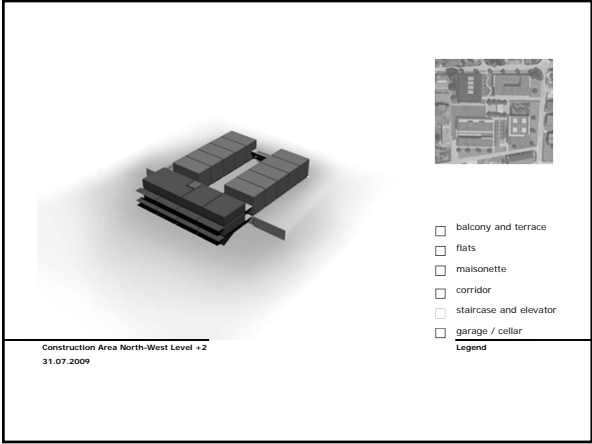
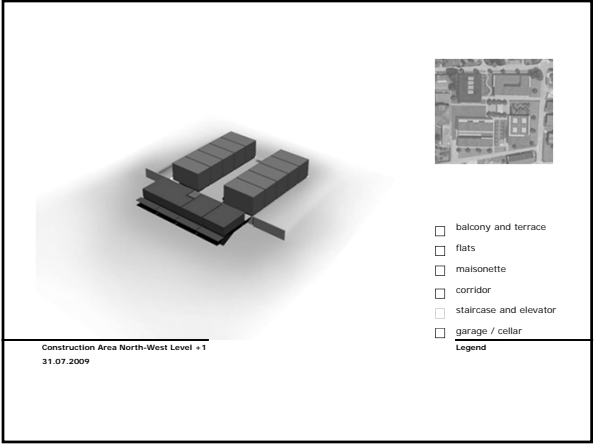
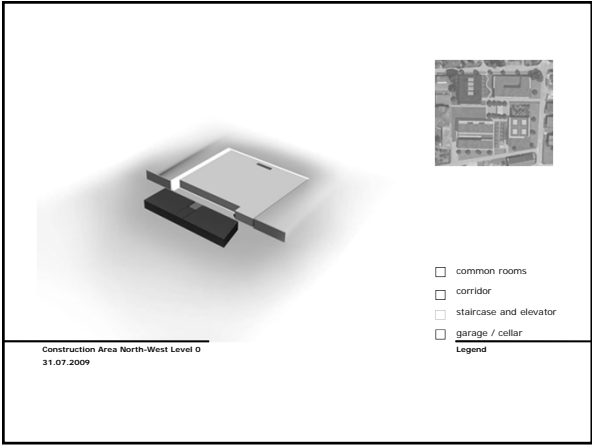
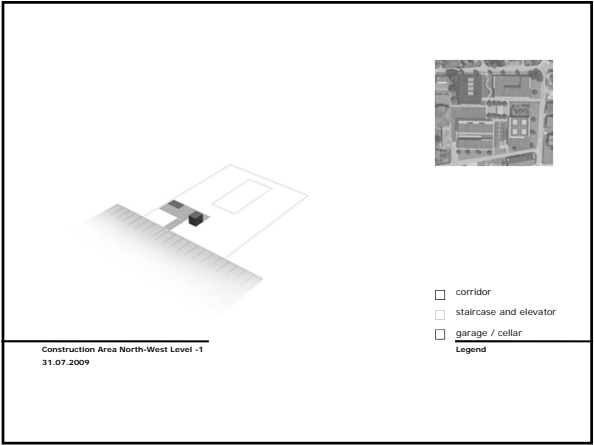
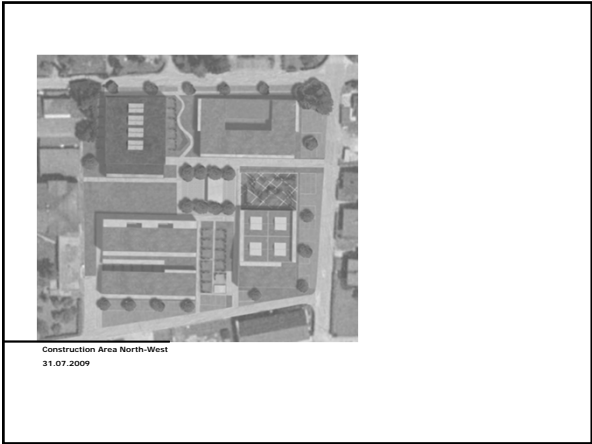
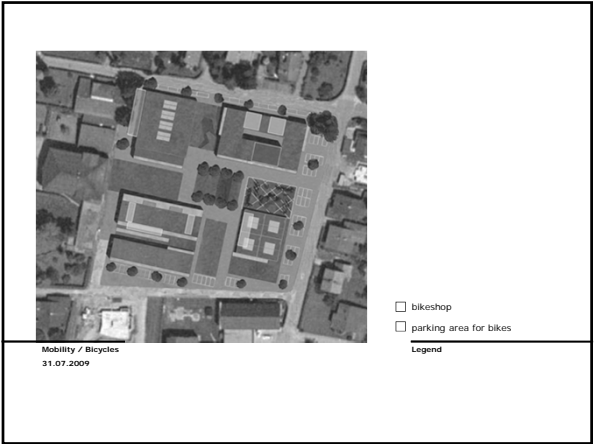
Areal View Existence

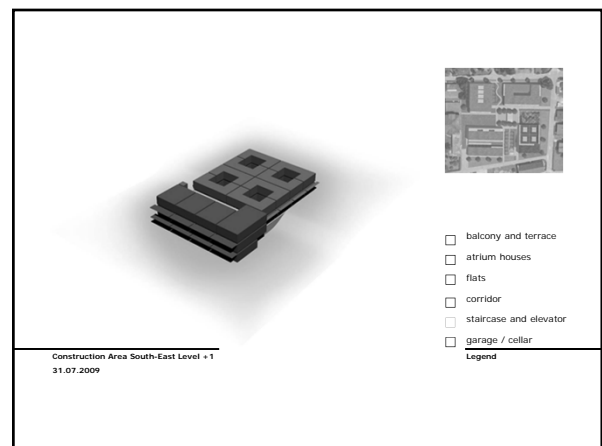
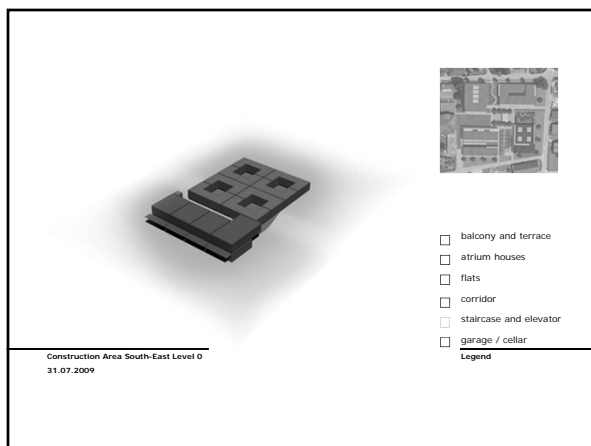
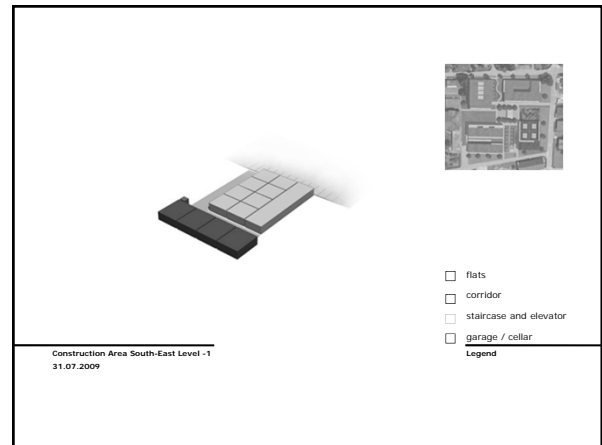
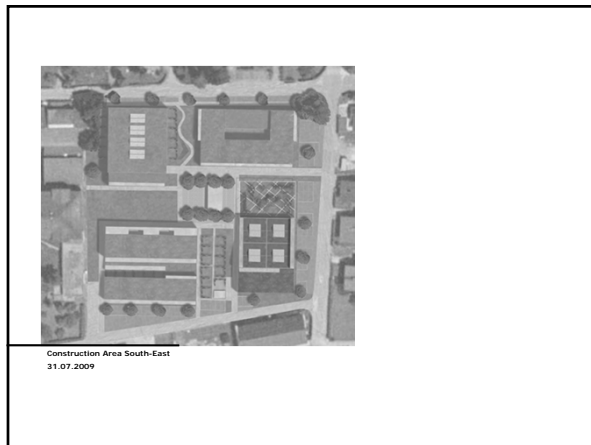
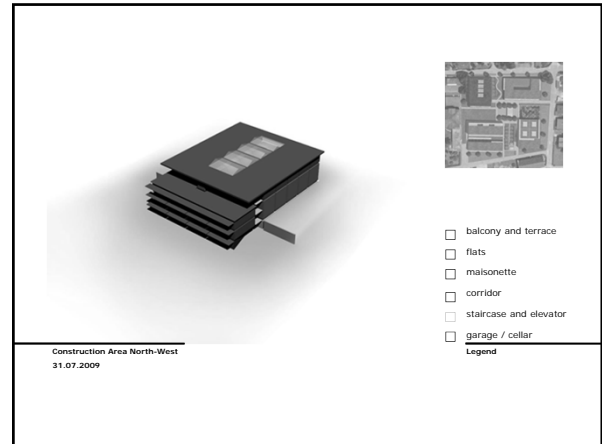
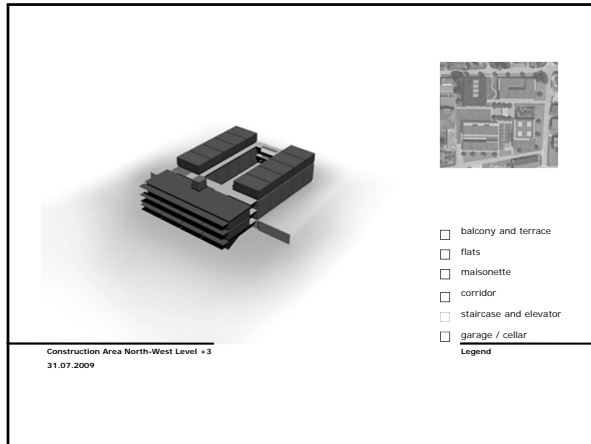


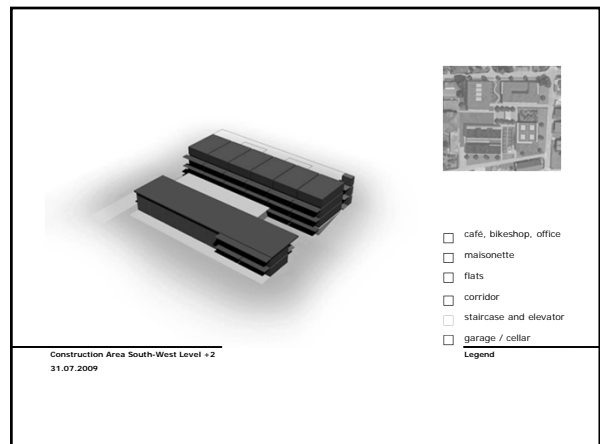
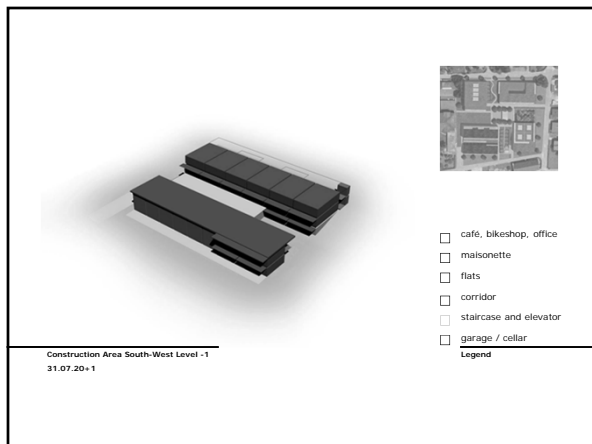
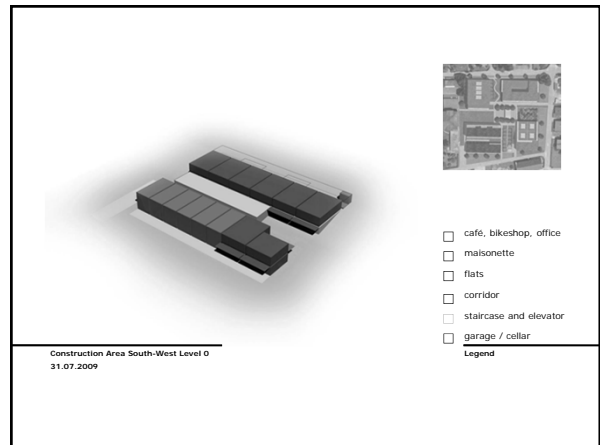
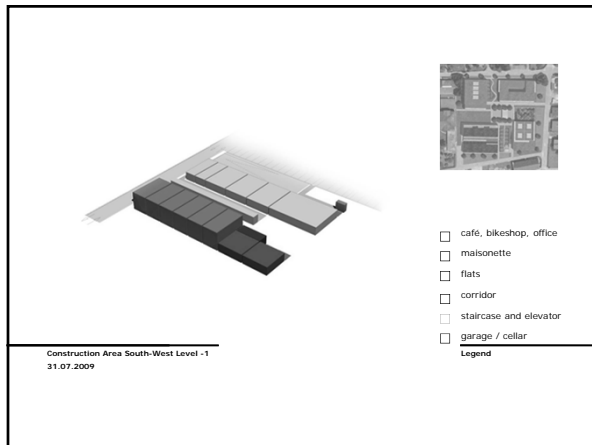
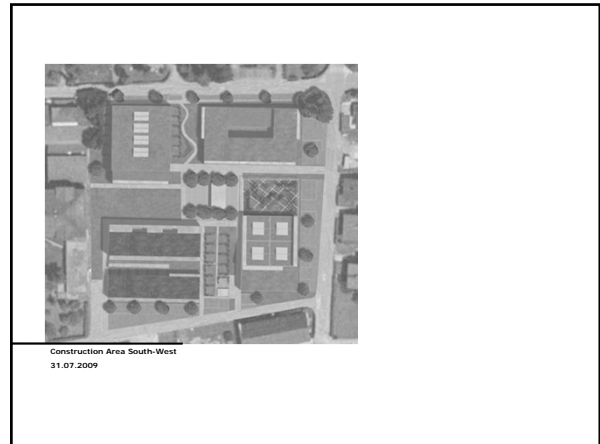
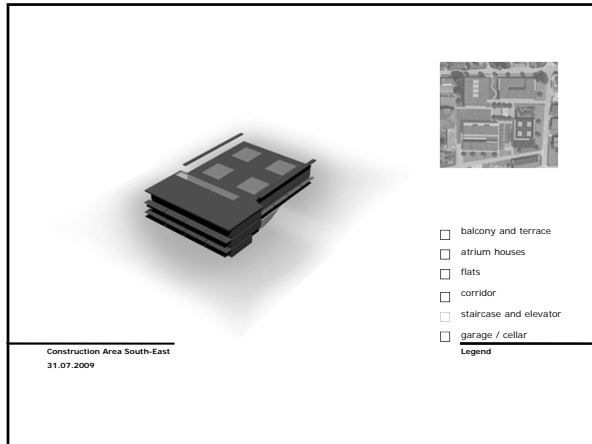
Areal View Project
31.07.2009

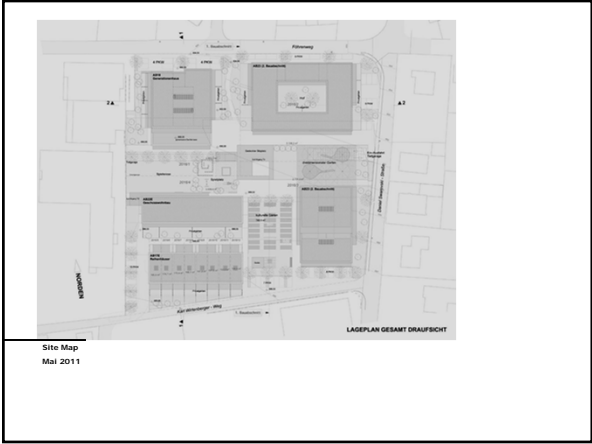
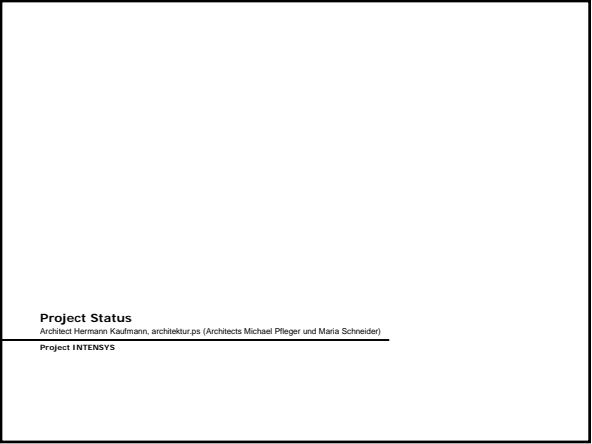
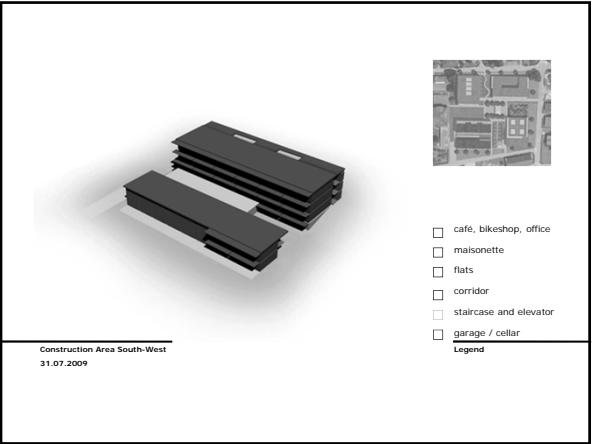


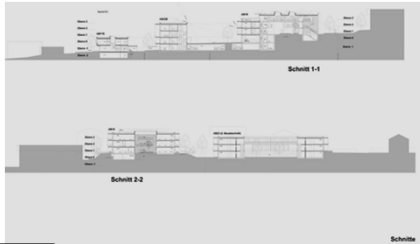




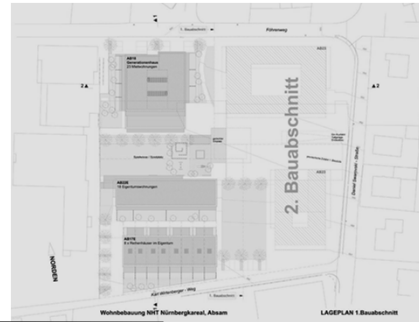








Sections
Mai 2011



Site Map, 1. Phase of Construction
Mai 2011



Layout Apartments Multi-Generation-House
May 2011



Layout Condominiums
May 2011



Layout Row-Houses
May 2011

UMass Wood Structures Symposium, September 8-9, 2011, University of Massachusetts Campus Center, Amherst, MA

Thank you for Attention

univ.-prof. arch. di dr. maria schneider
institute of urban design and regional planning - faculty of architecture - university of innsbruck - a 6020 innsbruck - teichnerstrasse 13
architektur ps. michael pfleger / maria schneider - a. 6020 innsbruck - adolf pichler platz 6